

SOLOMON

Solomon Technology Corporation(2359) Investor Presentation



SOLOMON Technology Corporation

Disclaimer

The following presentation and its associated contents contain forward-looking statements regarding operational strategy, financial results and business forecasts, which are based on internal information of the Company and observations of the overall external environment.

Forward-looking statements should not be understood or construed as guarantees of future performance, as such projections involve factors including but not limited to market demand, price fluctuations, competitive situation, global economic activity, foreign exchange rates, and other uncertainties beyond the control of the Company that may cause actual results to differ.

Information presented herein are based upon the Company's assumptions of the future outlook to date, and are not representative, explicit or implicit, of correctness, completeness or reliability. Should there be subsequent changes in circumstances, the Company does not assume any responsibility to update or review forward-looking statements.

The contents of this presentation should not be copied, edited, revised, shared or repurposed in any way without the knowledge or consent of the Company.

Agenda

- Company Profile
- Financial Results
- Outlook & Strategy
- Q&A

Agenda

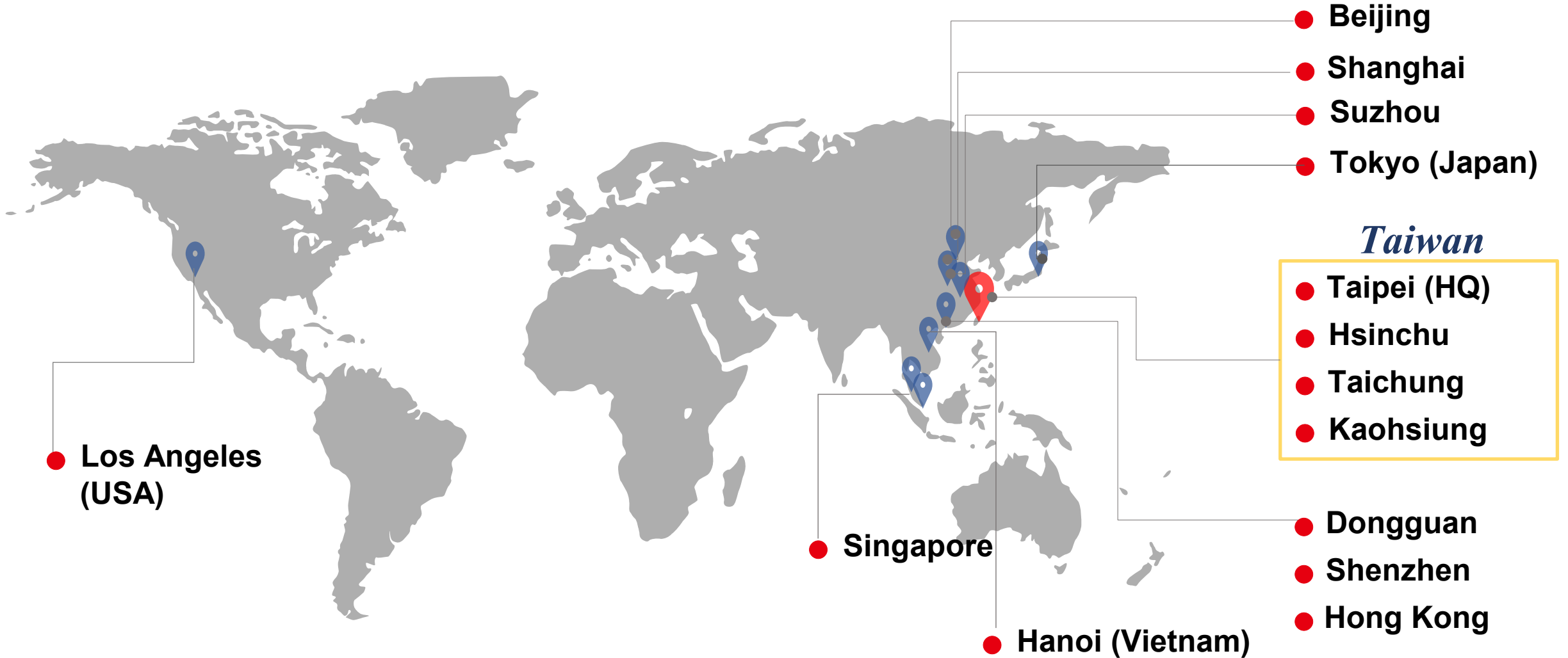
- **Company Profile**
- Financial Results
- Outlook & Strategy
- Q&A

Company Profile

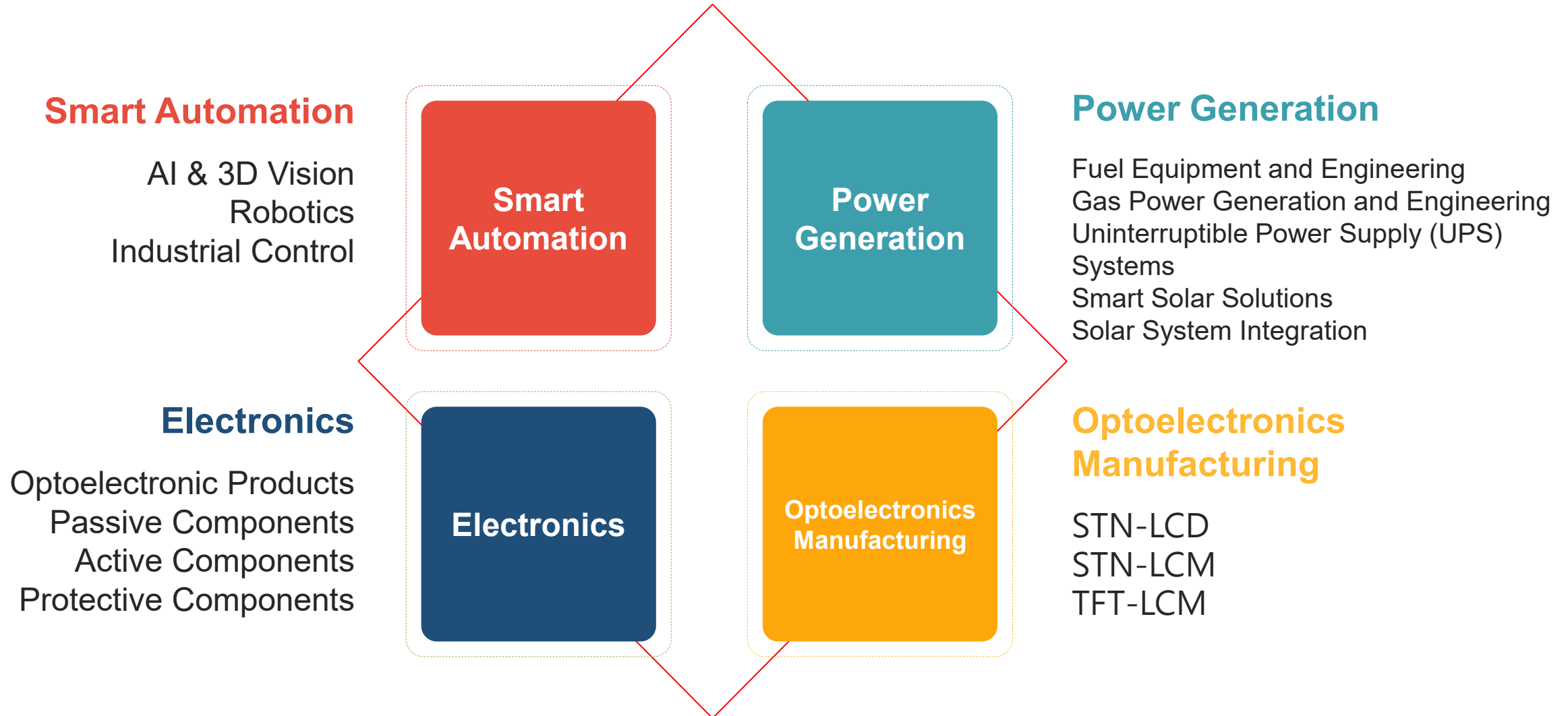
- **Established:** 1973 (Solomon Enterprise)
- **Publicly Listed:** 1996 (TWSE 2359)
- **Capital:** NT\$1.715 billion
- **Core Businesses:**
 - Self-Developed Solutions: AI Vision, Optoelectronic Display, and other solutions
 - Agency Solutions: Robotic Arm Applications, Automation Control Systems, Energy Equipment, and other solutions



Global Network



Solomon Group Core Structure

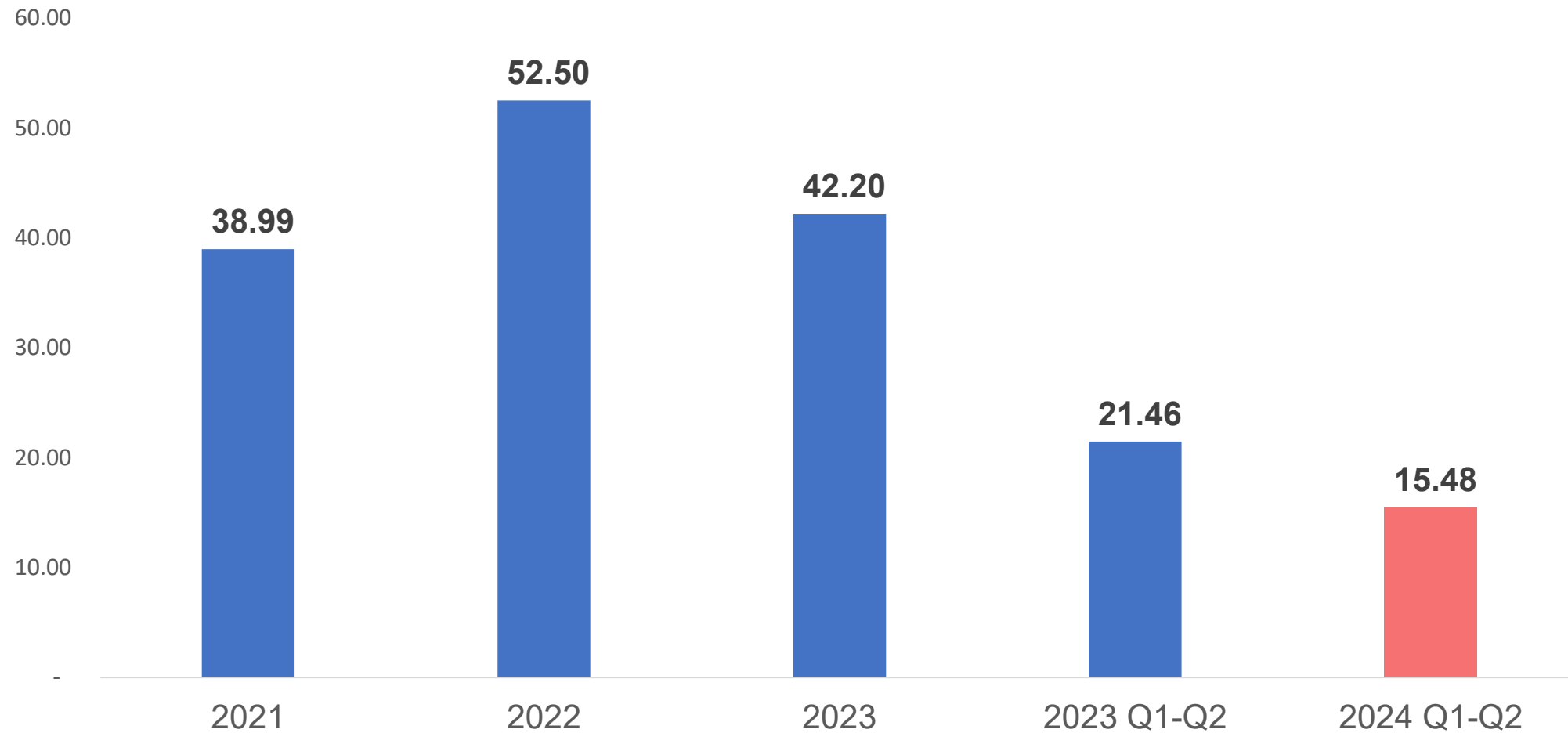


Agenda

- Company Profile
- **Financial Results**
- Outlook & Strategy
- Q&A

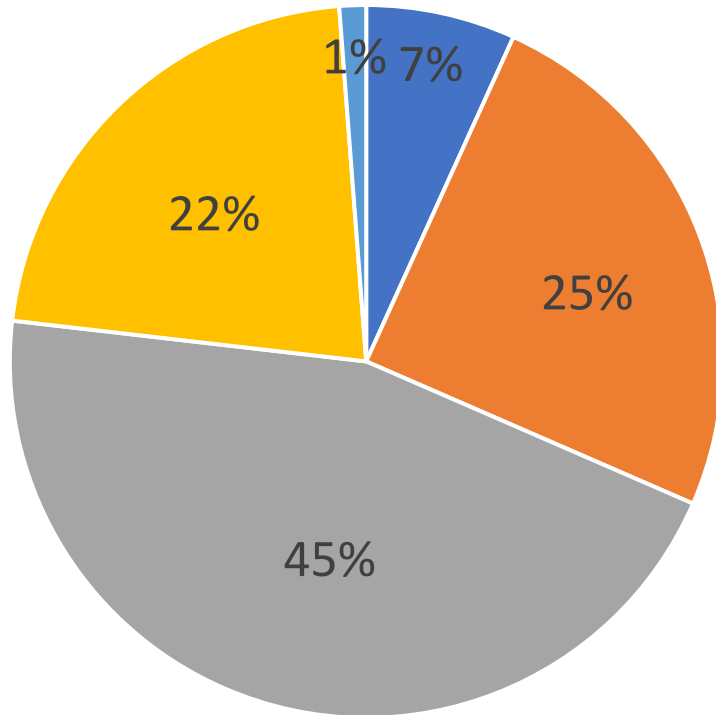
Consolidated Revenue

Unit: NT\$ 100 million

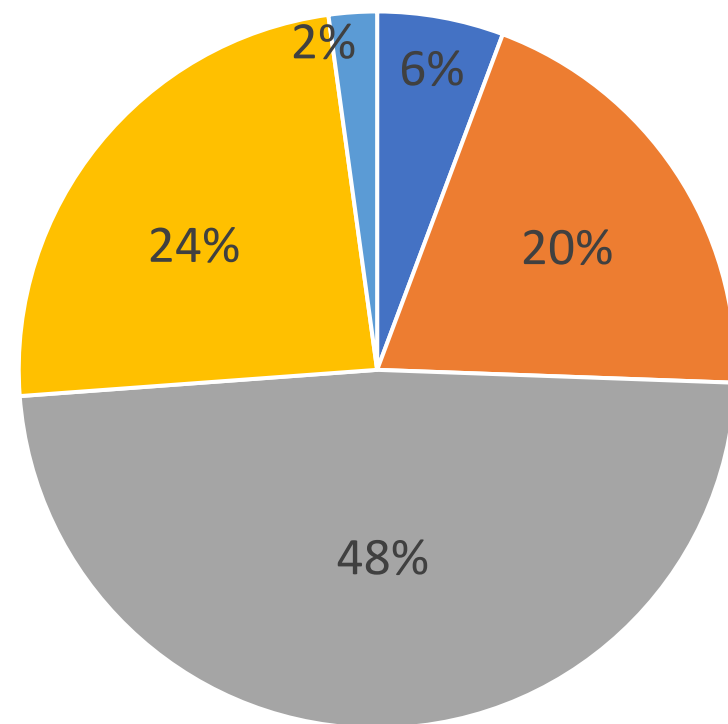


Sales Breakdown (by BU)

2024 Q2



2023



■ Electronics ■ Optoelectronics ■ Energy & Power ■ Automation ■ Others

Consolidated Income Statement

Unit: NT\$'000

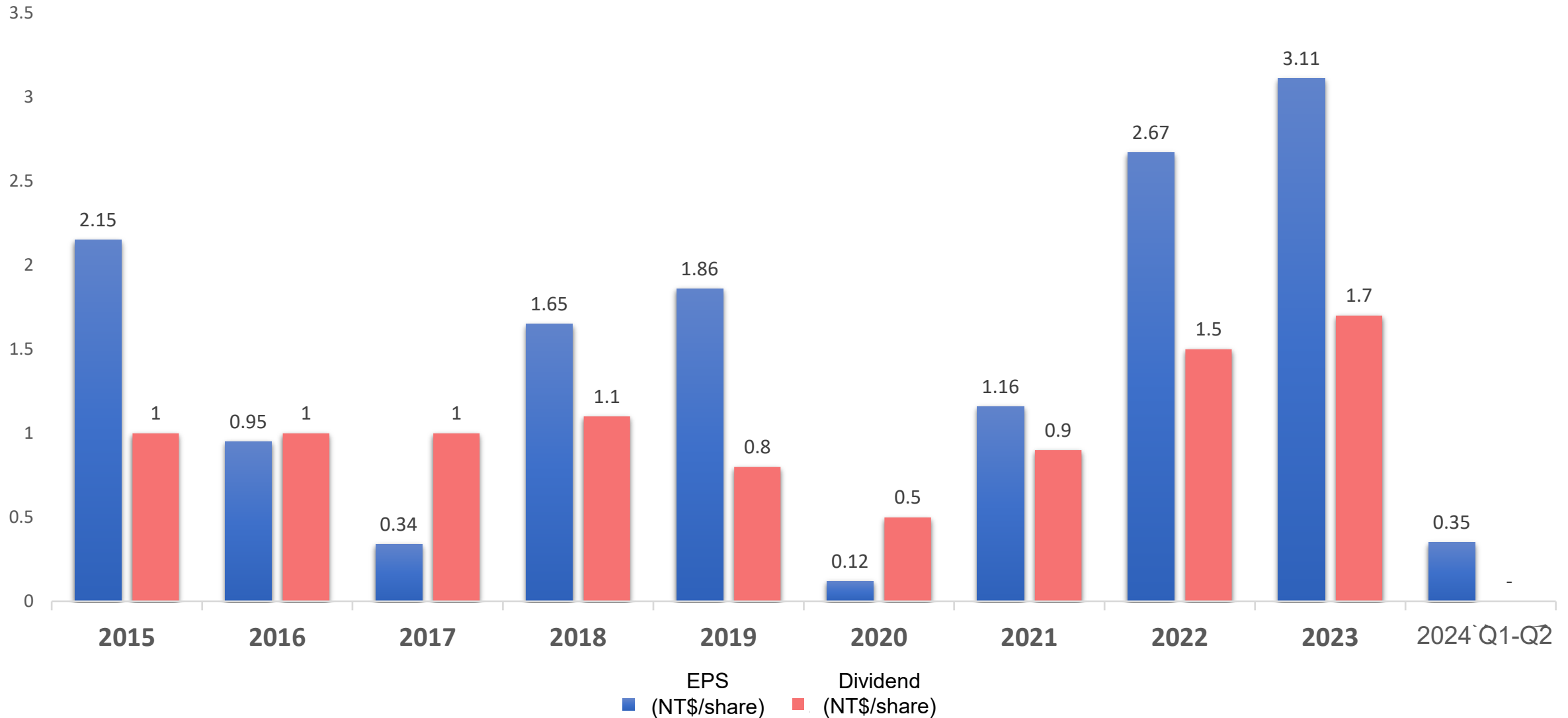
	2024 Q1-Q2		2023 Q1-Q2		YoY	2023	
	\$	%	\$	%	%	\$	%
Revenue	1,548,386	100.00	2,146,475	100.00	(27.86)	4,219,903	100.00
Gross profit	349,346	22.56	483,185	22.51	(27.70)	968,719	22.96
Operating expenses	(402,643)	(26.00)	(420,889)	(19.61)	(4.34)	(825,574)	(19.56)
Operating income	(53,297)	(3.44)	62,296	2.90	(185.55)	143,145	3.39
Interest income	83,120	5.37	79,256	3.69	4.88	155,228	3.68
Other income	38,437	2.48	69,782	3.25	(44.92)	123,395	2.92
Finance costs	(10,955)	(0.71)	(8,485)	(0.40)	29.11	(16,767)	(0.40)
Other gains and losses	60,078	3.88	224,031	10.44	(73.18)	223,411	5.29
Share of profit accounted for using equity method	422	0.03	(1,626)	(0.08)	(125.95)	10,112	0.24
Total non-operating income and expenses	171,102	11.05	362,958	16.90	(52.86)	495,379	11.74
Earnings before tax	117,805	7.61	425,254	19.80	(72.30)	638,524	15.13
Income tax	(50,530)	(3.26)	(35,940)	(1.67)	40.60	(80,737)	(1.91)
Net income	67,275	4.35	389,314	18.13	(82.72)	557,787	13.22
Profit (loss),attributable to owners of parent	59,573	3.85	376,064	17.52	(84.16)	532,241	12.61
EPS (NT\$)	0.35		2.19		(84.02)	3.11	

Consolidated Balance Sheet

Unit: NT\$ '000

	June 30, 2024		December 31, 2023		June 30, 2023	
	\$	%	\$	%	\$	%
Cash and cash equivalents	1,656,083	17.09	1,255,387	14.03	1,525,890	17.37
Current financial assets	1,116,412	11.52	895,051	10.00	1,147,999	13.07
Accounts and notes receivable, net	876,194	9.04	1,003,064	11.21	791,539	9.01
Current inventories	1,797,033	18.55	1,892,638	21.15	1,124,064	12.80
Other current assets	762,620	7.88	400,218	4.47	985,436	11.22
Non-current financial assets at amortised cost	1,501,229	15.49	1,389,834	15.53	1,409,396	16.04
Property, plant and equipment	436,629	4.51	433,387	4.84	426,611	4.86
Investment property, net	865,960	8.94	871,320	9.74	876,861	9.98
Other non-current assets	677,598	6.98	807,193	9.03	497,101	5.65
Total assets	9,689,758	100.00	8,948,092	100.00	8,784,897	100.00
Current borrowings	718,857	7.42	673,000	7.52	778,000	8.86
Current contract liabilities	1,375,812	14.21	1,131,473	12.64	1,371,303	15.61
Accounts payable	922,622	9.52	885,710	9.90	585,931	6.67
Other payables	492,389	5.08	193,111	2.17	465,640	5.30
Other current liabilities	74,025	0.76	127,950	1.43	105,574	1.20
Other liabilities	303,358	3.13	278,444	3.10	51,369	0.58
Total liabilities	3,887,063	40.12	3,289,688	36.76	3,357,817	38.22
Total equity	5,802,695	59.88	5,658,404	63.24	5,427,080	61.78
Total liabilities and equity	9,689,758	100.00	8,948,092	100.00	8,784,897	100.00
Financial indicators						
Current ratio		173%		181%		169%
Debt ratio		40%		37%		38%
Debt to equity ratio		67%		58%		62%

EPS & Dividend Policy



Agenda

- Company Profile
- Financial Results
- **Outlook & Strategy**
- Q&A

Energy Equipment

Product

Agent	Current Product Line	Diesel Generator 、 Gas-Turbine Generator 、 Dynamic UPS 、 Busbar 、 Static UPS 、 DC Charging System 、 Smart Cabinet 、 Solar Inverter
	2023-2025 Key Product Line	System Engineering
		Continue to promote current product line and develop Energy Storage System, BMS, and EMS
Own Brands	SOLOMON Diesel Generator	

Application

Technology Sector

- ◆ Semiconductor
- ◆ Panel
- ◆ PCB
- ◆ Substrate
- ◆ CoWoS

Green Energy

- ◆ Biogas power generation
- ◆ Waste heat power generation
- ◆ Natural Gas Power Generation

Public Infrastructure

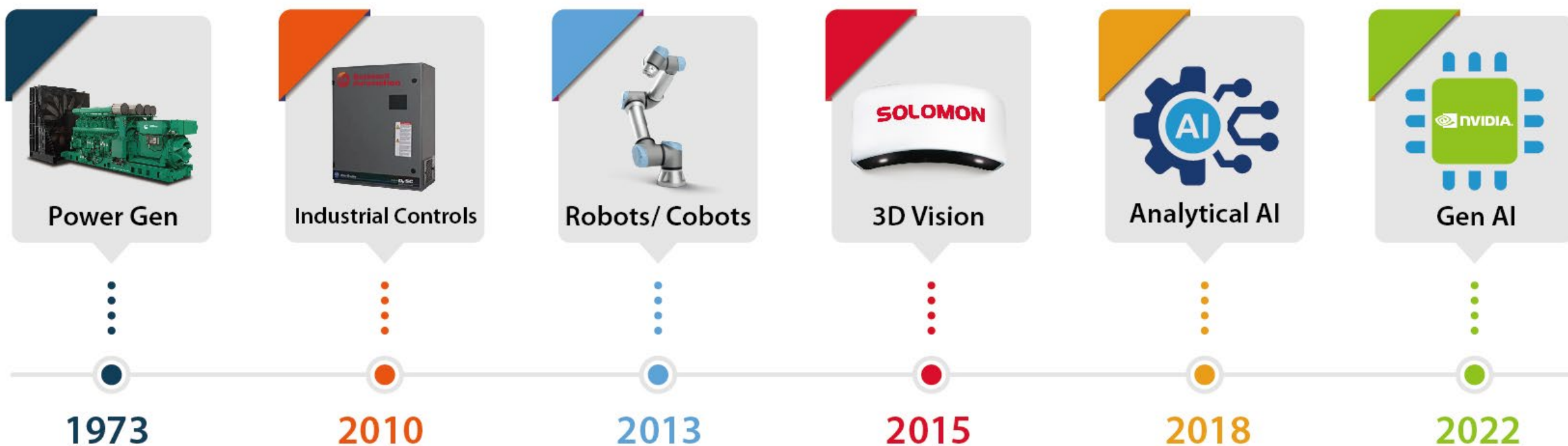
- ◆ MRT
- ◆ Power Plants
- ◆ Water Resources
- ◆ Datacenter
- ◆ Hospital

Real Estates

- ◆ High-end office buildings
- ◆ Logistics center
- ◆ Cold Chain Logistics
- ◆ Urban renewal
- ◆ IDC
- ◆ Hotels
- ◆ Shopping centers

AI · 3D Vision · AR

Timeline of Vision Business



Accolades



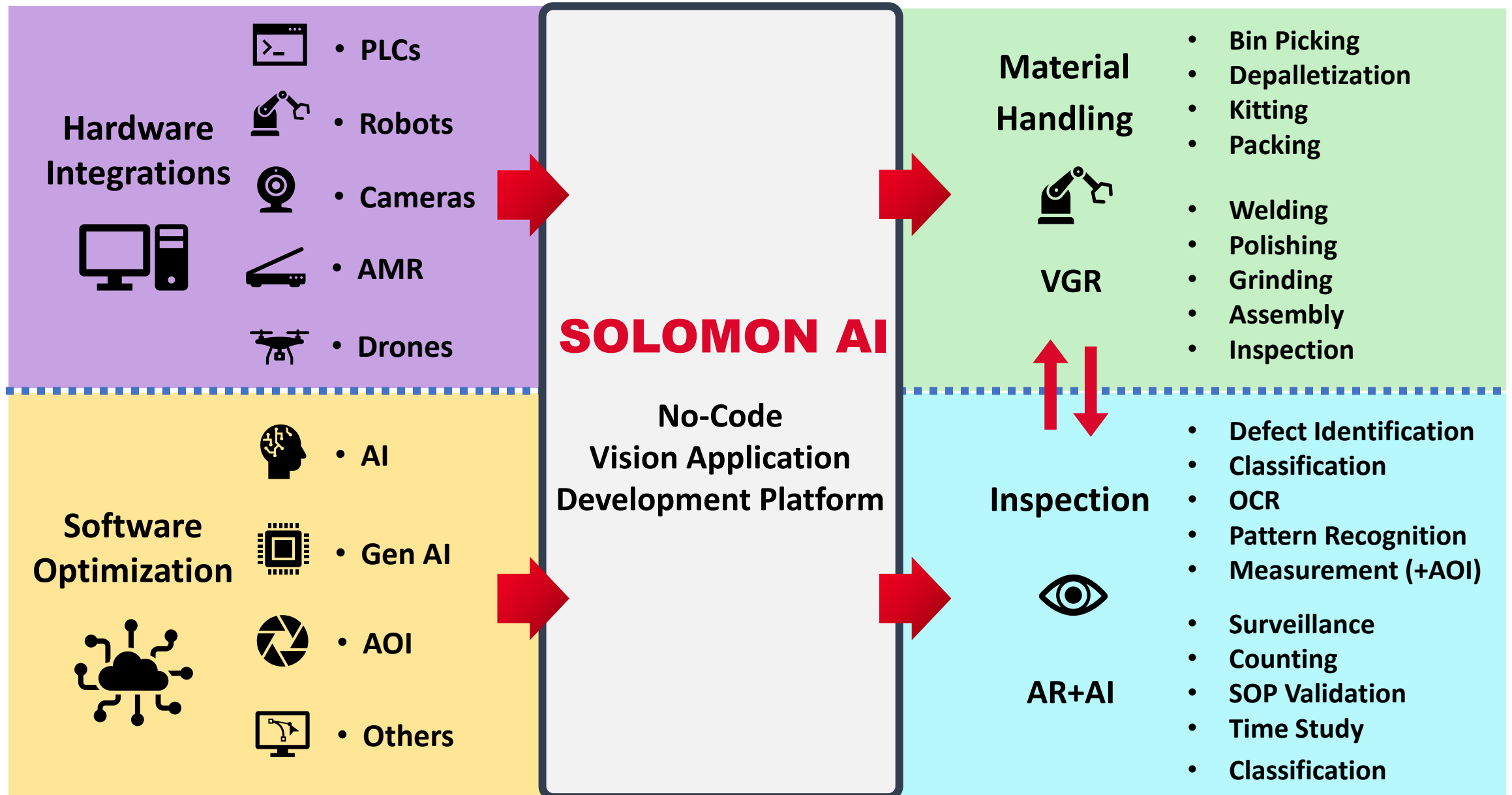
2019
AccuPick&3D Scanner

2020
Solvision

2021
JustPick

2023
META-aivi

Customize & Deploy AI Rapidly with Ease



SOLOMON

Vision products

Intelligent Automation Solutions | Augmented Intelligence Solutions

Industrial 3D Camera | Deep Learning Software | AR-Powered AI Platform

AccuPick



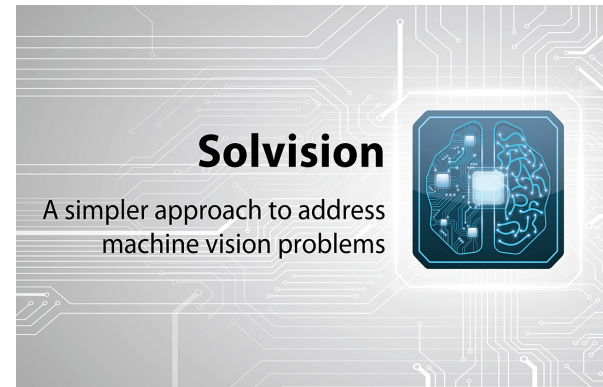
RANDOM BIN PICKING

SolMotion



VISION GUIDED ROBOT

SolVision



**DEEP LEARNING FOR
INSPECTION**

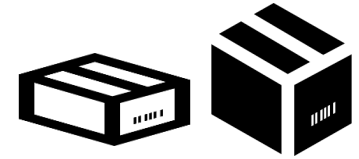
META-aivi



AR+AI SOLUTIONS

AccuPick

3 PL Application



Recognizing and picking materials without specifying the size, shape, or quantity of the boxes.



Identifying the center of the box and applying the label.

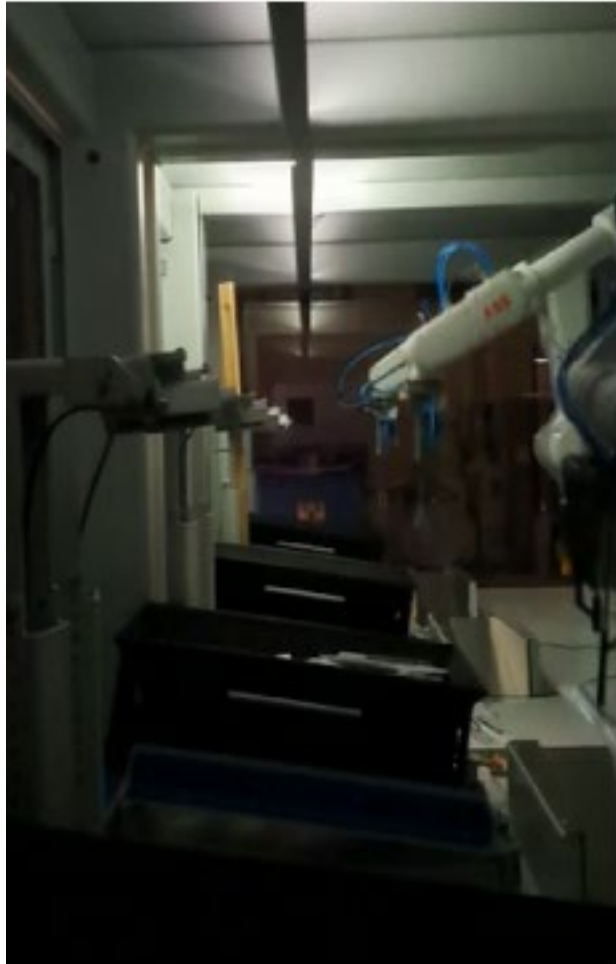
AccuPick

Picking of Semi-Transparent Objects



AccuPick

Random Bin Picking of 500 SKUs



Digital Twins



SOLOMON

AccuPick

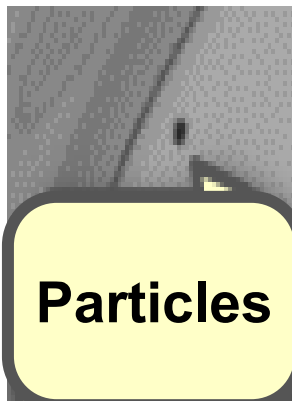
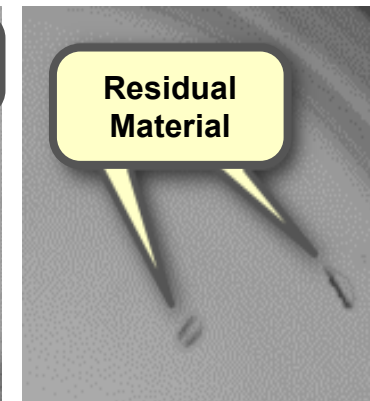
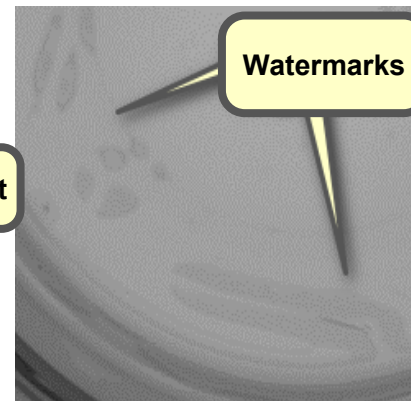
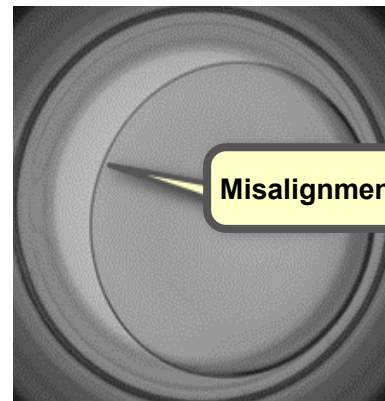
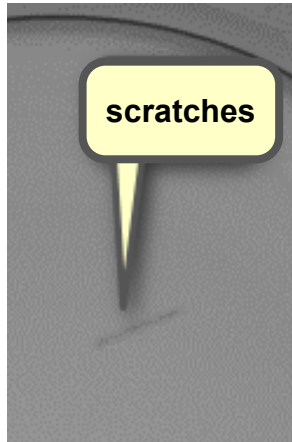
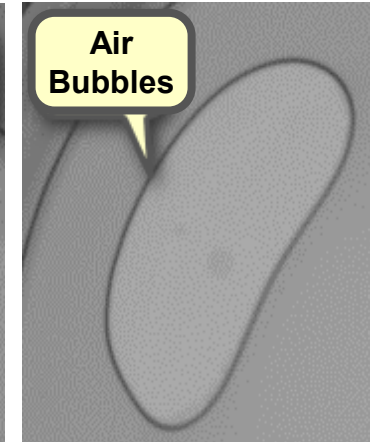
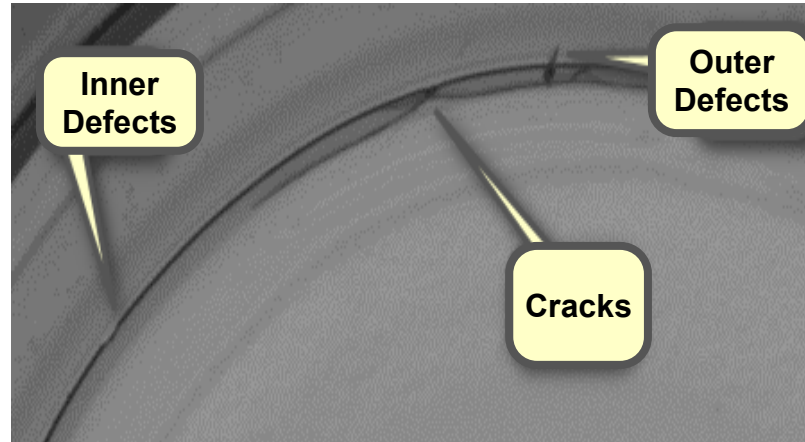
Dual-Arm Robot Piece Picking



Solvision

Contact Lens Defect Inspection

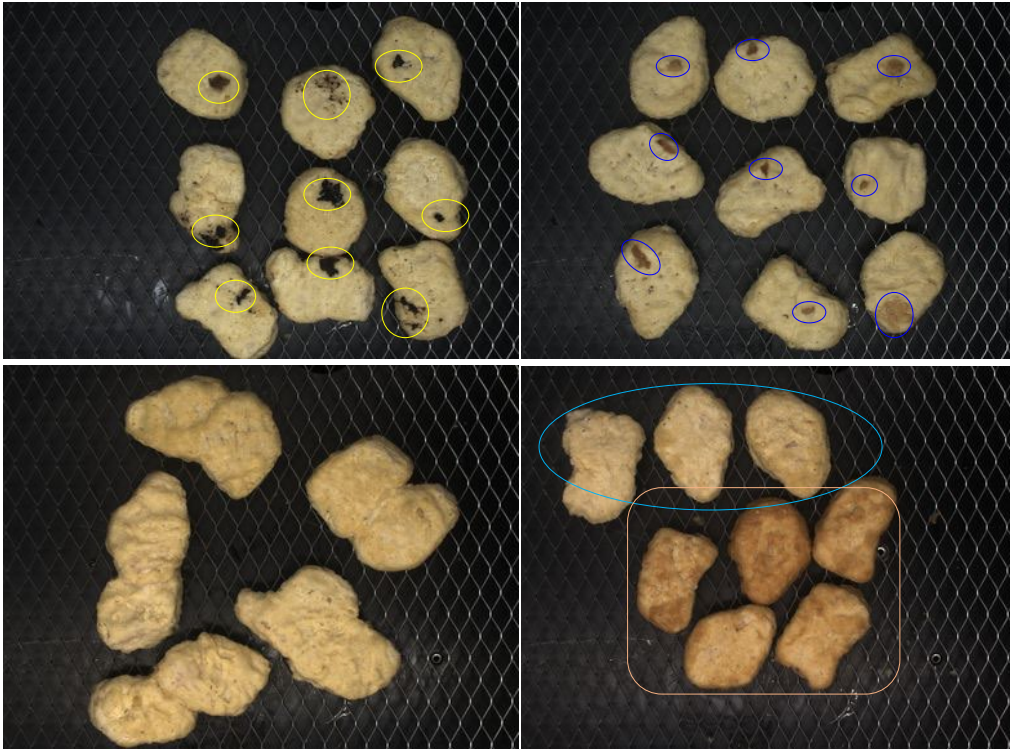
- **Types of Contact Lens Defects**
 - Inner and outer defects, air bubbles, cracks, scratches, misalignment, watermarks, residual material, particles
- **Benefits of the SOLOMON Solution**
 - Expands the range of defect detection, overcoming traditional inspection challenges.
 - Improves screening yield by 5-6%, saving product recall costs and enhancing brand reputation.
 - Traditionally, 70% of manpower is dedicated to inspection on production lines; our solution helps clients reduce labor costs.



Solvision

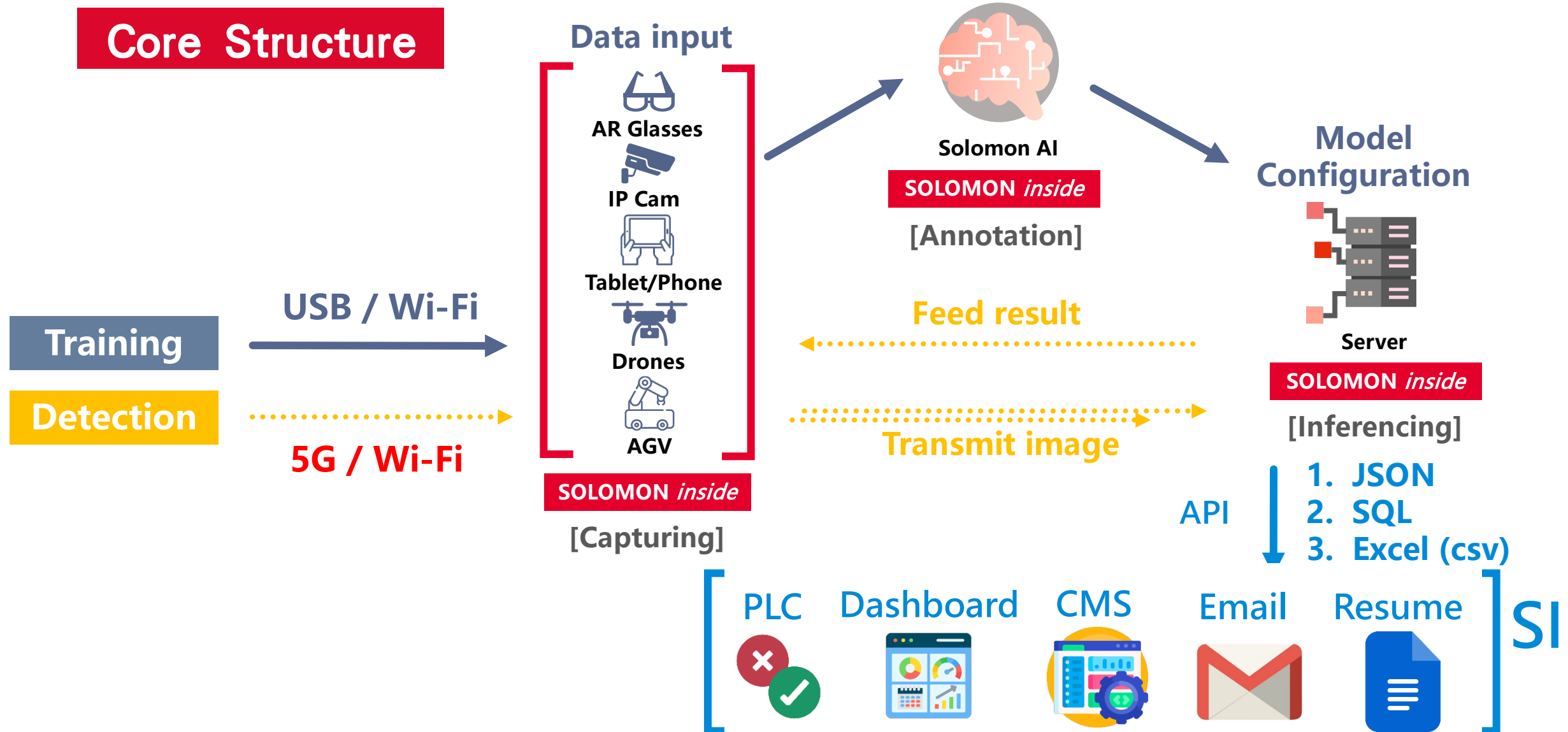
Chicken Nugget Defect Inspection

- Simultaneously distinguishes defects in different orientations and types (black or brown oil residues, overlapping connections, dark surfaces).
- Combines AOI (Automated Optical Inspection) for precise positioning and uses robotic arms for sorting and removal.



Meta-aivi

Core Structure



Meta-aivi

**Energy
Industry**

Wind turbine blade component detachment detection

Inspection



➔ It is possible to use drone photography combined with Solomon AI recognition to detect whether **components of wind turbine blades have detached**.

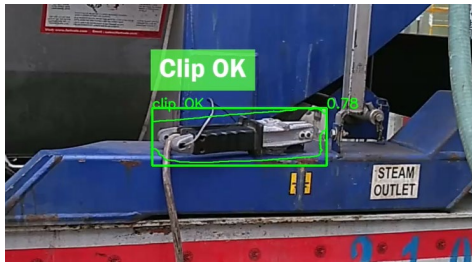
Meta-aivi

| Petrochemistry Chemical Tank Injection SOP Validation

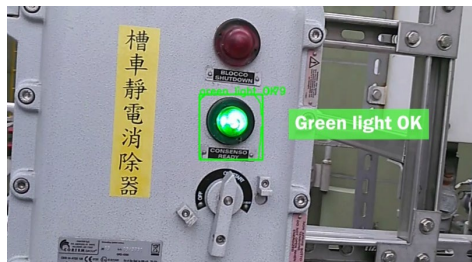
Inspection



1. Verify if **sleepers** are in correct place



2. Confirm the **ground wire** position



3. Confirm the grounding box has **green light on**



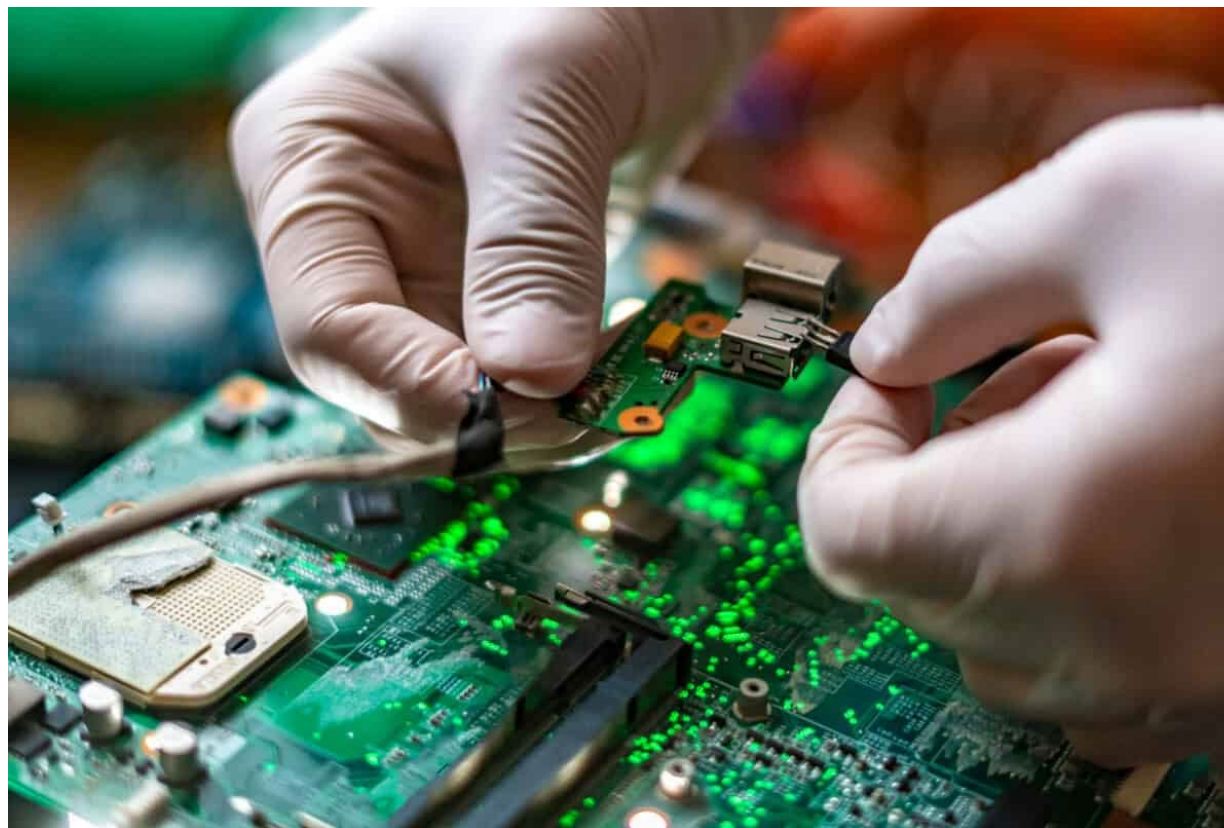
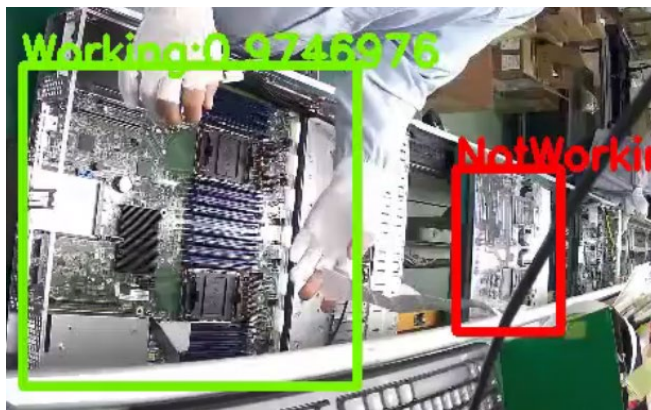
➔ Solomon AI employs a **multi-stage safety validation process** across various sections of the factory, in line with the current trend of digital checklists that integrates an electronic internal system.

Meta-aivi

電子製造業

組裝站時間偵測

檢測



SOLOMON AI檢測伺服器各組裝站工作時間，確保工作效率與追蹤產品狀態。

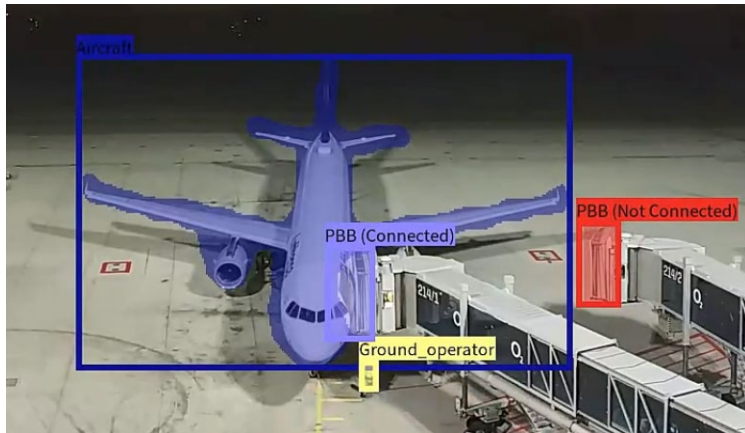
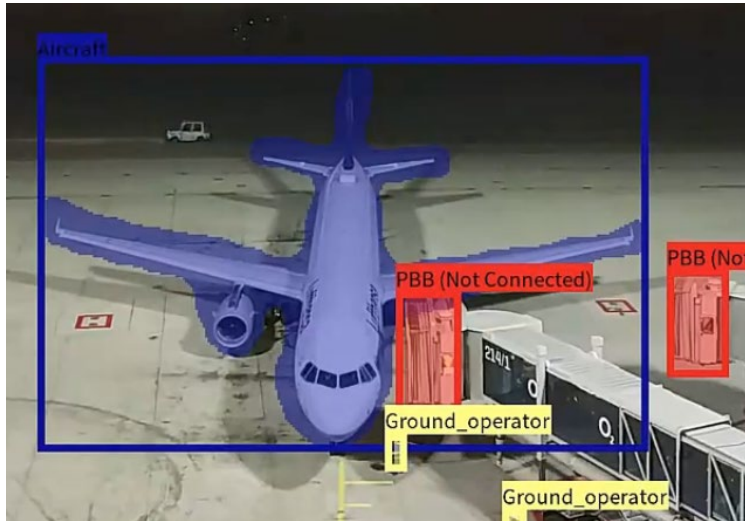


SOLOMON AI檢測伺服器各組裝站工作時間，確保工作效率與追蹤產品狀態，同時保留組裝紀錄。

Meta-aivi

| Airport Apron Management

Inspection



➔ Solomon **AI tracks the duration of operations** such as landing, baggage handling, refueling, air bridge connection, catering replenishment, and others, providing management with data for work efficiency analysis.

Meta-aivi

Pet Grooming

Translates to "recognizing the body size and coat length of dogs."

Inspection



➔ Using Solomon AI to recognize the body size and coat length of dogs can indeed help standardize grooming fees and record pet image information, **improving operational efficiency** and customer experience in the pet industry.

Agenda

- Company Profile
- Financial Results
- Outlook & Strategy
- **Q&A**

SOLOMON